

The newsletter of the Solihull & District branch
of CAMRA - the Campaign for Real Ale

www.solihullcamra.org.uk

free

Solihull Drinker



Issue No: 48

Spring 2009

Local Pubs Week

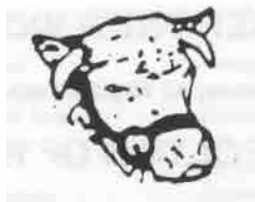
Last issue I mentioned CAMRA's Community Pubs Week 2009 — now renamed Local Pubs Week. Our branch will again be running our Perfect Pint Puller competition in the Solihull and District area, very popular last year and eventually won following a wonderful display of expertise by Sophie Clark from The White Lion, Hampton in Arden. Can other bar staff across our area do better this year?? If you think so, ask your publican for information and encourage your regulars to support you by filling a voting slip, available from our website, www.solihullcamra.org.uk Further information on where to send the voting slips can also be found on the website. Don't forget that the aims are: a warm welcome, efficient service in a clean glass, together choice of drinks at your pub. The judges—who whose bar staff are competition—will be as their criteria; with a certificate, presentation, and prize for the winner. The competition will run during the 3rd week in March, with judging and the presentation taking place after that.



This time we will also be offering an award of a framed certificate to the pub in our area deemed to have done the most to support Local Pubs Week. We suggest that you take advantage of the last of the winter weather to encourage people into your pub during the same week as the PPP competition as it could form part of your efforts!. Again, see our website for details. In these dismal days it is vital that we all play our part in keeping our pubs, and pub heritage, alive, for all of us to enjoy in the future, so we look forward to seeing how inventive publicans can be.!!

Julia Hammonds, Newsletter Editor

Inside: Don't miss the Dates for your Diary



THE BULL'S HEAD

Barston Lane, Barston

TEL: 01675 442830



VISIT OUR 15th CENTURY VILLAGE INN
WITH A SELECTION OF REAL ALES AND REGULAR GUEST BEERS

Most recently listed in the CAMRA Good Beer Guide 2008

View our new website: www.TheBullsHeadBarston.co.uk

Solihull CAMRA Pub of the Year 2000 and 2002
Cask-Marque accredited

HOME COOKED MEALS ARE AVAILABLE LUNCHTIMES AND
EVENINGS MONDAY TO SATURDAY IN THE PLEASANT SURROUNDINGS
OF THE PUB OR IN OUR SEPARATE INTIMATE RESTAURANT
(Sundays 12 to 3pm for lunch - no evening meals)
TELEPHONE RESERVATIONS WELCOME

*Spring is on the way—we may not have left the worst of the weather behind us just yet, but sun or rain, your welcome is always assured at The **Bull's Head, and the beers are just waiting for you to visit. Come soon!***

What have eggs to do with beer?

Adrian Southgate would know. Having set up a small farm and rescue centre in Lugtrout Lane, Elmdon Heath, he already sells free-range eggs from his rescued battery hens, but has big plans for the future. He has two little Golden Guernsey goats, ducks, fancy fowl, a pair each of mini-lop-eared rabbits, lion-maned rabbits, and New Zealand rabbits, and plans to have sheep and pigs soon. He is currently stocking up three poly-tunnels with plants which should be on sale in Spring, and is also planting outdoors as well, including cider apple trees. And the connection with beer? "Well" said Adrian, "My late father used to be a wine-maker and I thought now that I have the space I'd have a go at following in his footsteps, though with me it would be beer and not wine." Time will tell if the beer will be for public consumption or just for Adrian's benefit!

Take the children to feed the goats and see new arrival, Felix the cat, and buy some eggs – they cook wonderfully whether poached, scrambled or fried. You can visit Catney Farm and Rescue Centre at 159 Lugtrout Lane during daylight hours but it is best to ring first to ensure the farm is open – 07725 697714.

What has mowing to do with beer

Local drinker Phil enjoys a good pint after a hard day's work mowing lawns, and with the new Spring season upon us he and his team are sure to be busy in the coming days. As well as mowing they offer total lawn care, landscaping, tree management and drive treatments, at very reasonable prices. They pride themselves on a good job done and will willingly advise you on what is best for your land. Call Phil at First Class Mowing on 01564 823667 for a quote.

The Solihull Drinker is the newsletter of the Solihull & District Branch
of CAMRA, the Campaign for Real Ale.

All contributions, comments and enquiries should be sent to Julia Hammonds:
The Editor, Solihull Drinker, c/o 4, Kendrick Close, Solihull, B92 0QD
or e-mail julia.hammonds@blueyonder.co.uk

The Editor reserves the right to amend or shorten any contributions in the Solihull Drinker,
but will always honour the spirit of the contribution.

Printed by Paper and Print, Stratford Road, Shirley.
Solihull CAMRA 2009 ©

The 49th edition of *Solihull Drinker* will be
published on Monday 1st June, 2009.

Copy deadline for advertising and contributions
will be Sunday 9th May, 2009

For complaints about short
measures, contact Solihull
Trading Standards on
0121 704 6844

Hail to the Ale! – local Beer, Pub, Club & Brewery news

Tom 'O The Wood, Rowington

The Tom 'O the Wood is going great guns after its re-opening, with manager James Brooks keen to offer visitors a lively atmosphere in which to drink their real ale. Plenty of entertainment is on offer, with James planning events for months ahead. Once the warmer weather begins, try a canal side wander down to the pub beside the Grand Union Canal on Finwood Road.



Solve the Mystery!

The local historical society in Hampton-in-Arden would like to hear from anyone who has any knowledge of an old alehouse in the village called The Red Lion. There are references in old documents, but no one seems to know exactly where it was. The chairman of the society, Robin Watkin, says "Various historians including a local vicar have made mention of it, and in a census, possibly in 1851, the recording officer was told to start his route beginning at the property known by the sign of The Yeoman, which is confusing as they may be one and the same building." The same census also lists a lady living in Hampton-in-Arden named Ann Gee, a publican of The Swan Inn. Again, nothing is known of the lady or the pub. Can you shed any light on these mystery stories? If so, contact the editor at the addresses within this magazine and your revelations will be passed on!

The Red House comes to the Rescue

The Red House, in Hermitage Road, Solihull, undertook a fundraising drive recently to raise money for the Marie Curie Hospice and collected enough to buy new furniture for the Day Service patients who visit the hospice on a regular weekly basis. The furniture was chosen to provide comfort and support while brightening and modernising the facility in Solihull Town Centre. The pub has been a long-standing supporter of the Marie Curie Hospice for some time now. Thanks go to all the visitors to the pub who kindly donated to the recent appeal, and the staff who gave up time to help with this worthy cause.



The Grenville Club

Not many people know about The Grenville Club. Tucked away discretely near Mell Square in Solihull town centre, it plays host to a current membership of around 75 people. The club was founded in 1922 when Mrs Annie Grenville donated premises so that **"the working men of Solihull" would have a place to socialise. The original premises were lost when Mell Square developed, but the current location has been in existence for the last 37 years. The club is primarily a snooker club but welcomes other guests as well as snooker players. They currently have two real ales on at all times, but are hoping to be able to install more, subject to attendance.**

The club would like CAMRA members to visit, try the real ales, and try their hand at a snooker table if they are not being played on by members at the time. The club is open from 7.00—11.00pm, Mondays to Saturdays. If you want to pop in, then have your CAMRA membership card to hand, ring the doorbell and tell the answering person that you are a CAMRA member, sign into the visitor's book, and show your CAMRA card to the bar staff for free entry. For further information, call 0121 705 0701.



The Royal British Legion

The Royal British Legion, in Union Road, Solihull Town Centre, is holding a their first Solihull Real Ale and Shanty Festival during Thursday 2nd and Friday 3rd April, from 3 pm - midnight both days. There will be 15 real ales, plus ciders, and food will be available. A host of entertainment is planned, with 14 sessions over the two days including bands such as Monkeys Orphan, Three Sheets to the Wind, Monkeys Fist and Bitter End. Tickets will cost £7.00 per person each day for entry, giving access to 3 afternoon and 4 evening sessions. Card-carrying CAMRA members will receive their first pint—or two half-pints - free with entry.

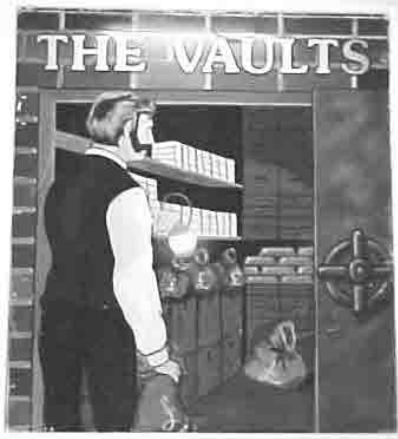
Long Itchington Beer Festival

Following the success of last year's joint beer festival, those pubs in Long Itchington are at it again! This year's festival, spread around the six pubs in Long Itchington, all within walking distance, will be from 1st—4th of May. This branch is planning a social there on Saturday 2nd May—for further details, see our website. For more information on the festival, email contact@LongItchingtonBeerFestival.co.uk

New pub on the Block

Casey Joe's, an Irish-themed pub, opened in Olton at the end of last year. The pub, named after publican Caroline Dowling's daughter, straddles the border between Solihull and Birmingham. Unfortunately no reports have come in about the pub as they do not serve real ale. If the situation changes we'll let you know.

Nick and Gwen welcome you to



The Real Ale venue in Knowle

- ◆ Six hand-pumped beers including regulars Ansell's Mild, Greene King IPA, Tetley Bitter, Wadworth 6X; and two guest beers
- ◆ Real cider from Weston's
- ◆ Food available lunchtimes Monday - Saturday

Solihull CAMRA Pub of the Year
2003, 2004, 2005, 2006, & 2008

Our beer range can't be bettered in the area—and as a Spring Special, we are featuring a beer festival with over 20 beers, running from Friday 3rd April till the following weekend.

Nick, Gwen and our great staff look forward to welcoming you.

CAMRA Good Beer Guide listed since 1993



The Vaults, St John's Close, Knowle.

Tel: 01564 773656



Bitter End



One Sheet Short

1ST Solihull Real Ale and Shanty Festival
Royal British Legion, Union Road
APRIL 2ND and 3RD 3 pm - Midnight

Tickets £7 each day 14 Sessions 15 Real Ales

0121 705 0742 or Rogerwaring@pianola.co.uk



March Events

FREE WIFI ZONE | FREE ROOM HIRE | MUDDY BOOTS WELCOME

Sun 1st **St. David's Day Carvery** 12noon - 4pm
Mon 2nd **Fish & Chip Night** 5pm - 9pm Fresh from Grimsby
Tues 3rd **Senior Citizen Lunch Menu** £4.95
Wed 4th **Chinese Buffet Night** All you can eat £10pp
Thurs 5th **Coffee Morning** 10am - 12noon - Two for One
Fri 6th **Raffle Night** 7pm
Sat 7th **Pre Club Bar!!!** - Cocktails & Dream's
Sun 8th **Carvery** 12noon - 4pm meets Sunday Social
Mon 9th **Fish & Chip Night** 5pm - 9pm Fresh from Grimsby
Tues 10th **Senior Citizen Lunch Menu** £4.95
Wed 11th **Quiz Night** 8pm
Thurs 12th **Coffee Morning** 10am - 12noon - Two for One
Fri 13th **Raffle Night** 7pm
Sat 14th **Pre Club Bar!!!** - Cocktails & Dream's
Sun 15th **Carvery** 12noon - 4pm meets Sunday Social
Mon 16th **Fish & Chip Night** 5pm - 9pm Fresh from Grimsby

Tues 17th **St. Patrick's Day** - Irish Drinks offer - Irish Music
Wed 18th **Curry Buffet Night** All you can eat £10pp
Thurs 19th **Coffee Morning** 10am - 12noon - Two for One
Fri 20th **Raffle Night** 7pm
Sat 21st **Pre Club Bar!!!** - Cocktails & Dream's
Sun 22nd **Mother's Day 3 Course Carvery** 12noon - 6pm
Mon 23rd **Fish & Chip Night** 5pm - 9pm Fresh from Grimsby
Tues 24th **Senior Citizen Lunch Menu** £4.95
Wed 25th **Quiz Night** 8pm
Thurs 26th **Coffee Morning** 10am - 12noon - Two for One
Fri 27th **Raffle Night** 7pm
Sat 28th **Live Music Pre Club Bar!!!** - Cocktails & Dream's
Sun 29th **Carvery** 12noon - 4pm meets Sunday Social
Mon 30th **Fish & Chip Night** 5pm - 9pm Fresh from Grimsby
Tues 31st **Senior Citizen Lunch Menu** £4.95



TOM
& O'THEC
WOOD
ROWINGTON

For more information call: 01564 782420 | Tom 'o' the Wood | Finwood Road | Rowington | Warwickshire | CV35 7DH | Website: www.tomtheewood.com

April Events

FREE WIFI ZONE | FREE ROOM HIRE | MUDDY BOOTS WELCOME | BRIDGE 63

1st Wed **Free Beer** 10am - 11am - **April Fools Day!**
2nd Thurs **Coffee Morning** 10am - 12noon - Two for One
3rd Fri **Raffle Night** 7pm - It could be you
4th Sat **Grand National Live at The Tom**
5th Sun **Carvery** 12noon - 4pm £7.50
6th Mon **Fish & Chips** - Eat in or Take Away
7th Tues **Senior Citizen Lunch** £4.95
8th Wed **Beat the Landlord** at Chess and Win a Meal for Two
9th Thurs **Coffee Morning** 10am - 12noon - Two for One

BANK HOLIDAY WEEKEND - LIVE HEINEKEN CUP AT THE TOM

10th Fri **Raffle Night** 7pm - It could be you
Live Music "The Emulsions" Keeping it Local
11th Sat **Family Fun Day**
Face Painting, Balloon Animals and Pub Games
12th Sun **Easter Sunday Carvery** £7.50
13th Mon **Pig Roast** from 12noon and Live Music
with Roy Ingram's Jazz & Blues Band from 2.30pm

14th Tues **Senior Citizen Lunch** £4.95
15th Wed **Quiz Night** 8pm
16th Thurs **Coffee Morning** 10am - 12noon - Two for One
17th Fri **Raffle Night** 7pm - It could be you
18th Sat **Chill Out** - Put your feet up. Let us do the work for you
19th Sun **Carvery** 12noon - 4pm £7.50
20th Mon **Fish & Chips** - Eat in or Take Away
21st Tues **Senior Citizen Lunch** £4.95
22nd Wed **Beat the Landlord** at Chess and Win a Meal for Two
23rd Thurs **St. George's Day** - All Pints £2.50 All Halves £1.50
24th Fri **Raffle Night** 7pm - It could be you
25th Sat **Pre Club Bar** - Cocktails & Dreams
26th Sun **Carvery** 12noon - 4pm £7.50
27th Mon **Fish & Chips** - Eat in or Take Away
28th Tues **Senior Citizen Lunch** £4.95
29th Wed **Quiz Night** 8pm
30th Thurs **Coffee Morning** 10am - 12noon - Two for One

TOM
O'THE
WOOD
ROWINGTON

Tom 'o' the Wood | Finwood Road | Rowington | Warwickshire | CV35 7DH | Grand Union Canal Bridge 63 | Telephone: 01564 782420 | Web: www.tomofthewood.com

May Events

FREE WIFI ZONE | FREE ROOM HIRE | MUDDY BOOTS WELCOME | BRIDGE 63

BANK HOLIDAY WEEKEND

HEINEKEN RUGBY SEMI FINALS HALF TIME FREE NIBBLES

1st Fri **Raffle Night** 7pm - It could be you
2nd Sat **Family Fun Day**
Face Painting, Balloon Animals and Pub Games
3rd Sun **Walking Group** 11am from the front door
4th Mon **Carvery** 12noon - 4pm £7.50
Pig Roast from 12noon and Live Music
with Roy Ingram's Jazz & Blues Band from 2.30pm
Fish & Chips 5pm - 9pm - Eat in or Take Away

5th Tues **Senior Citizen Lunch** £4.95

6th Wed **Spanish Tapas** All You Can Eat £10

7th Thurs **Coffee Morning** 10am - 12noon - Two for One

8th Fri **Raffle Night** 7pm - It could be you

9th Sat **Beat the Landlord** at Chess and Win a Meal for Two

10th Sun **Carvery** 12noon - 4pm £7.50

National Sandwich Week

11th Mon **Fish & Chips** 5pm - 9pm - Eat in or Take Away

12th Tues **Senior Citizen Lunch** £4.95

13th Wed **Chinese Buffet Night** - All You Can Eat £10

14th Thurs **Coffee Morning** 10am - 12noon - Two for One
15th Fri **Raffle Night** 7pm - It could be you
16th Sat **Beat the Landlord** at Chess and Win a Meal for Two
17th Sun **Carvery** 12noon - 4pm £7.50
18th Mon **Fish & Chips** 5pm - 9pm - Eat in or Take Away
19th Tues **Senior Citizen Lunch** £4.95
20th Wed **Curry Buffet Night** - All You Can Eat £10
21st Thurs **Coffee Morning** 10am - 12noon - Two for One

BANK HOLIDAY WEEKEND

HEINEKEN RUGBY FINALS HALF TIME FREE NIBBLES

22nd Fri **Raffle Night** 7pm - It could be you
23rd Sat **Family Fun Day**
Face Painting, Balloon Animals and Pub Games
24th Sun **Carvery** 12noon - 4pm £7.50
25th Mon **Pig Roast** from 12noon and Live Music
with Roy Ingram's Jazz & Blues Band from 2.30pm
Fish & Chips 5pm - 9pm - Eat in or Take Away

26th Tues **Senior Citizen Lunch** £4.95

27th Wed **A Night of Jokes** Come along and tell a joke! 5pm - 9pm

28th Thurs **Coffee Morning** 10am - 12noon - Two for One

29th Fri **Raffle Night** 7pm - It could be you

30th Sat **Beat the Landlord** at Chess and Win a Meal for Two

31st Sun **Carvery** 12noon - 4pm £7.50



TOM
O'THE
WOOD
ROWINGTON

Tom 'o' the Wood | Finwood Road | Rowington | Warwickshire | CV35 7DH | Grand Union Canal Bridge 63 | Telephone: 01564 782420 | Web: www.tomofthewood.com

Off Our Patch

A Trans-Pennine Rail Ale Trip and the Best Laid Plans...Part 2

Upon arrival at Dewsbury, we made our way over the footbridge to platform 2 and the West Riding Licensed Refreshment Rooms. This is another legendary real ale outlet on the Trans-Pennine railway line. The bar is located within the original station buildings and was converted from the original waiting rooms in 1994. The Italianate/Tudor style of the building is very unusual and is best observed from the car park (the former Goods Yard). Perhaps the most unusual features are the Arabic arches in each doorway and window, and in the archways which separate each room.

The bar was already very busy—however, no tables were free because a large section of the refreshment rooms had been reserved for a wedding party! We eventually found a seat outside and debated what to do. In the meantime, I enquired at the bar about food and was told a limited selection was available that day and was handed a menu. Rejoining the others and studying the choice available (basically sandwiches or an all-day breakfast) we decided to return to Huddersfield for lunch. As there was a train due within 10 minutes we decided not to bother staying for a drink, which was very disappointing as there was a superb selection available: Abbeydale *Matins*, Anglo Dutch *Aunt Glads*, Black Sheep *Best Bitter* and *Riggwelter*, Timothy Taylor *Dark Mild* and *Landlord*, and Leeds Brewery *Eager Owl*. A glance at the bar confirmed the beers being served were in good condition, too. My plan was starting to unravel....

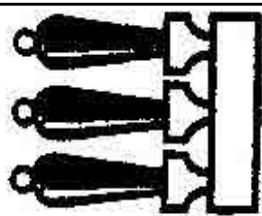
Huddersfield station was very busy when we returned, with many football fans in evidence. There was a considerable police presence on the station, too, which indicated that the immediate fallback plan of having lunch in the Head of Steam on the station (yet another superb real ale venue) was also a non-starter. A quick check through the door confirmed my fears – the bar was packed!

My wife suggested trying the New Wharf, a pub we had passed many times on our previous visits to our son in his student days and which was located just round the corner from the University. He agreed the food was good, particularly the steaks, so we set off across town. I asked him if the New Wharf was a real ale pub. "I'm not sure," he replied. My wife was insistent we go there so I silently prayed that some real ale would be available. Our stroll through the centre of Huddersfield was pleasant in the late September sunshine and it took about 15 minutes to reach the New Wharf. It is an unimposing building, built of York stone, situated on the corner of Wakefield Road and close to Queensgate shopping centre.



The New Wharf

To be continued



BERRIDGES

REAL ALE

Off Licence

* AN EVER CHANGING SCENE
OF EXCITING DRAUGHT
BEERS THROUGHOUT THE
SEASONS

* 200 DIFFERENT BEERS
DURING THE YEAR

* CAMRA GOOD BEER GUIDE
LISTED
CONTINUOUSLY
SINCE 1983



* PARTY BARRELS
AVAILABLE FOR
ANY OCCASION

* ORDER EARLY TO AVOID
DISAPPOINTMENT!!

* SALE OR
RETURN ON
SEALED GOODS

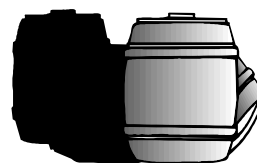


* EXCITING
RANGE OF BOTTLED BEERS

Telephone

0121 744 2827

266 CRANMORE BOULEVARD,
SHIRLEY,
SOLIHULL



It takes all sorts to campaign for real ale

Join CAMRA today...

Complete the Direct Debit form below and you will receive three months membership free and a fantastic discount on your membership subscription. Alternatively you can send a cheque payable to CAMRA Ltd with your completed form, visit www.camra.org.uk or call 01727 867201. All forms should be addressed to Membership Secretary, CAMRA, 230 Hatfield Road, St Albans, AL1 4LW.

Save money by paying by Direct Debit!



Your Details

Title Surname

Forename(s)

Date of Birth (dd/mm/yyyy)

Address

..... Postcode

Email address

Tel No (s)

Please state which CAMRA newsletter you found this form in?

	Direct Debit	Non DD
Single Membership (UK & EU)	£20 <input type="checkbox"/>	£22 <input type="checkbox"/>
Joint Membership (Partner at the same address)	£25 <input type="checkbox"/>	£27 <input type="checkbox"/>

For concessionary rates please visit www.camra.org.uk or call 01727 867201.

Partner's Details (if Joint Membership)

Title Surname

Forename(s)

Date of Birth (dd/mm/yyyy)

I wish to join the Campaign for Real Ale, and agree to abide by the Memorandum and Articles of Association.

I enclose a cheque for

Signed Date

Applications will be processed within 21 days



Instruction to your Bank or Building Society to pay by Direct Debit
Please fill in the form and send to: Campaign for Real Ale Ltd, 230 Hatfield Road, St Albans, Herts AL1 4LW



Name and full postal address of your Bank or Building Society

To the Manager Bank or Building Society

Address

Postcode

Name(s) of Account Holder (s)

Bank or Building Society Account Number

Branch Sort Code

Reference Number

Originators Identification Number

9 2 6 1 2 9

FOR CAMRA OFFICIAL USE ONLY

This is not part of the instruction to your Bank or Building Society

Membership Number

Name

Postcode

Instructions to your Bank or Building Society

Please pay CAMRA Direct Debits from the account detailed on this instruction subject to the safeguards assured by the Direct Debit Guarantee. I understand that this instruction may remain with CAMRA and, if so will be passed electronically to my Bank/Building Society.

Signature(s)

Date

This Guarantee should be detached and retained by the payer.

The Direct Debit Guarantee

- This Guarantee is offered by all Banks and Building Societies that take part in the Direct Debit Scheme. The efficiency and security of the Scheme is monitored and protected by your own Bank or Building Society.
- If the amounts to be paid or the payment dates change CAMRA will notify you 10 working days in advance of your account being debited or as otherwise agreed.
- If an error is made by CAMRA or your Bank or Building Society, you are guaranteed a full and immediate refund from your branch of the amount paid.
- You can cancel a Direct Debit at any time by writing to your Bank or Building Society. Please also send a copy of your letter to us.

Banks and Building Societies may not accept Direct Debit Instructions for some types of account.



Dates For Your Diary

Branch Meetings

Monday 2nd March	The Reservoir, Earlswood
Monday 6th April	The Golden Acres, Damsonwood
Monday 4th May	The Oak, Hockley Heath
Monday 1st June	The Boat, Catherine de Barnes

(All Branch meetings start at 8.30pm except where noted otherwise)

Committee Meetings

Monday 20th April	Fleur-de-Lys, Rowington.
Monday 8th June	Bulls Head, Earlswood

(8.30pm start. Members may attend Committee meetings but only participate if invited to do so by the Committee)

Socials

Sunday 19th April	Earlswood Ramble and pub crawl meet at the Reservoir midday.
Saturday 2nd May	Long Itchington Beer Festival see website for further details.

*For more details, visit our website: www.solihullcamra.org.uk
or contact*

Secretary Allan Duffy on 01564 200 431

Membership Matters

You've all seen these television programmes about real ale and so on which is very good publicity for our cause, so why not contribute by doing your own bit and join CAMRA. The more members we have the greater the influence we shall have for getting rid of this ghastly lager stuff and filling the pubs with our favourite ales.

For how to join and how much it costs phone me on 0121 705 8743.

Bob Jackson, Membership Secretary

The White Lion

Hampton in Arden



Now returned to its former glory

Traditional Bar Meals
A la carte restaurant dining
Family Sunday Lunches
Cask conditioned "Real Ales"
A selection of fine wines
Children's Menu Options

En-suite Accommodation

All this *and* a Great Atmosphere

"The return of the village pub"

Bookings: 01675 442833



Warwickshire's Specialist Cyder House.

A wide range of Real English Ciders

Three Cask Conditioned Ales

Traditional Bar Meals & Snacks

Giving you back the traditional English pub
service as you always remember it.

Old Warwick Road, Rowington, Warwick. CV35 7AA

Telephone 01926 842183

ADRIAN AND THE COMMITTEE WARMLY WELCOME YOU TO

The Rowington Club

On Rowington Green, Rowington, Warwickshire CV35 7BD

Telephone: 01564 782087

Opening hours: Weekdays: 2.00 pm – 11.00 pm

Weekends and Bank Holidays: 12 Noon – 11.00 pm

Large car park

Come and relax playing dominoes, cards, snooker and pool

Three regularly changing real ales available

(With your support we can really increase the range of ales!)

Live music most Saturdays, and Special Events every month

Being a club, we charge £1.00 per visit (free to card-carrying CAMRA members)
(full membership: £10.00 per annum)

Spring Events:

March 21st (evening): 60's rock group 'Out of the Blue'

April 23rd (evening): St. George's Day celebration—pub games

April 25th (evening): St. George's Day Race Night

May 16th (evening) band 'The Emulsions)

June 21st (afternoon): Ladies' Day: free champagne, strawberries and ice-cream
for the lady attendees, prize for best hat, entertainment.

Saturday evening events a speciality: phone the Club for details of who's on -
all who come will be welcome.

For full details of all events, please ring Adrian at
The Rowington Club, and he will be only too pleased
to talk to you about a wonderful time out.

The Golden Acres

Joint Solihull & District CAMRA Most Improved Pub of the Year 2005



Three guest ales
plus a regularly
changing
traditional cider

Children Welcome
Beer garden with
play frames

Rowood Drive

Damsonwood, Solihull

Tel. 0121 704 9002

Entertainment for all....

Dominoes & Nuts Poker League
(newcomers welcome!): Mondays

Darts: Tuesdays and Thursdays

Karaoke: Every Thursday

Regular entertainment Saturdays

Big screen sports regularly featured

Why not join one of our sports teams?

Further information from the pub on
0121 704 9002

Try our authentic Chinese food
Eat in and/or Take-away

0121 711 8130

Mondays-Saturdays (except Tuesdays) 5.00-11.30pm

Sundays: Eat-in 5.00-10.30pm Take-away 5.00-11.30pm

VAULTS BEER FESTIVAL - APRIL 3rd - 10th

Nick & Nigel at the Vaults in Knowle have arranged yet another mini beer festival to attract even more real ale drinkers through the door. This time it starts on Friday April 3rd and will feature at least 20 different ales. Many will be Spring or early Summer seasonal ales plus a selection of old faithfuls which always go down well.

The way it works at Vaults' beer festivals is that instead of having at least 2 guest ales on at once there will be at least 4. When one runs out another even better one will replace it until the end of the week when the 20 plus range will gradually return to the normal but still interesting 6. So if you call in say on a Wednesday night, you will have a choice of up to 6 beers, possibly more if one runs out while you are there. That tends to happen quite frequently during these mini festivals as beer drinkers tend to come out to Knowle rather more than usual. That is probably one of the reasons the Vaults has won Solihull CAMRA's prestigious Pub of the Year award for 5 of the last 6 years.

If you have not been to one of the Vaults real ale festivals before, get yourselves down to Knowle and try this one out. You won't be disappointed and will probably find you want to come back again before your favourite ale runs out.

The Grenville Club

The premier snooker venue in Solihull, at 702 Warwick Road

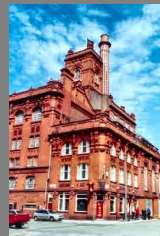
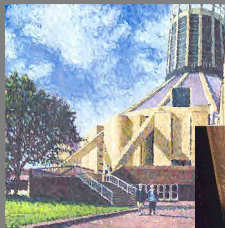


Open to guests from 7pm to midnight, Mondays to Fridays.

Open longer hours to members. Two real ales always available.

Ring 0121 705 0701 for further details and membership information.

CAMRA Liverpool Weekend Away - Part 2: Southport and a Beer Festival



Liverpool as City of Culture 2008 welcomed a bunch of Solihull CAMRA members to try the beers and pubs of that fair city. Having arrived on the Thursday for our long weekend we spent the first day north of the city centre as readers of the last Drinker will know. Friday was a day out to Southport, a short train journey from Liverpool.

Not having booked breakfast at the hotel a small party made their way to Wetherspoons' Richard John Blackler in Charlotte Row, Liverpool. What a breakfast it proved to be, excellent value at under a fiver and it certainly set us up for our session at the Southport Brewery.

Having caught the train, a short walk brought us to Southport Brewery in Russell Street. Our host was Paul Bardsley the brewer and owner, and no time was lost in charging our glasses with Southport Golden Sands, an excellent 4% beer which according to the Good Beer Guide 2008 is a golden coloured bitter, triple hopped with citrus flavours. I can concur, it was wonderful!

The brewery which Paul opened just outside Southport in 2004 is located in an industrial unit on a small estate near the local gas works. The kit came from Buntingford Brewery



in Hertfordshire and consisted of a 2.5 barrel plant which coped with production of Sand Grounder, a 3.8% session beer and Natterjack, a 4.3% premium beer.

With an increase in demand the search was on for a larger plant. Success came with the acquisition of a 5 barrel plant from Poachers Brewery in Lincolnshire. Since then a new purpose copper and 2 five barrel fer-

menting vessels from Bank Top, Bolton have been installed. This enabled Paul to increase his standard range with Cyclone, Carousel and Golden Sands supplemented by seasonal beers which include both a mild and a winter warmer. Paul emphasised that all his beers have names with local connections, some I could work out, others were a mystery to me. Time soon caught up with us as we had a train to catch so fond farewells were given to Paul and downing our glasses we just made the train for Southport and our next stop the CAMRA beer festival.



Southport is very much a Victorian town that grew in the nineteenth century as a seaside resort for Manchester and Liverpoolian artisans. It has a spacious central street called Lord Street on which is the Arts Centre, the venue of the 9th Sandgrounder Beer festival, our destination. The Arts Centre is Grade 2 listed and includes the library and a gallery and is a perfect venue for a beer festival. Over 70 beers were available and with 2 hours to kill we

quickly got down to the business. A small group of us gathered around a table with the intention of trying as many beers as possible. Third of a pints were available which enabled us to try just over 40 beers between us. The beer quality was a little variable but it was Saturday and beers had been on tap since Thursday evening. However, most beers were pleasantly drinkable, if a little flat. My personal favourites were Red Rose Bowley Bitter [more like a stout], Southport Swordlock and Ulverston Lonesome Pine. Time soon came around to try the pubs in Southport and first on our itinerary was the Guest House.

As the Good Beer Guide says this is a magnificent Edwardian pub with tiles, fireplaces and three rooms. It was bustlingly busy when we arrived and seems to be a truly locals pub. Most of the beers were pretty ordinary, Old Peculiar Deuchers IPA, Theakstons



Bitter and Mild, Adnams Bitter and Jennings Crag Rat. However there were 3 interesting guests. Boggart Standard Pioneer, George Wright Midday Sun and Cromwell Signature. I tried the Boggart which was in good condition but nothing special.

Soon we were on our way again over to the Barons Bar part of the Scarisbrick Hotel. The Hotel is a large Victorian edifice and as the interior shot of the Barons Bar shows it exudes Victorian splendour and is indeed baronial as its name implies. It has been a real ale bar for some 4 years now and has been the local CAMRA branch Pub of the Year in 2005 and 2008. It holds 2 beer festivals a year and at the time of our visit had 7 beers and 2 ciders on tap. Beers I tried were the hotels own beer, Flag and Turret [brewed by Carlsberg Tetley?], a light beer



which was in pretty good condition. I also tried Shardlow Caven-dish Dark which left a little to be desired but the Hanby Golden Honey was superb! Other beers on tap were Titanic White Star, Moorhouses Pride of Pendle, Tetley Bitter, and Sharps Doombar. For cider lovers there were two available, one at 8.4%!

Feeling peckish now we all agreed that it was time to move on to the local Wetherspoons. There are 2 in Southport, the Willow Grove and the Sir Henry Segrave, the latter not far from the Barons Bar and hence our choice. Apparently Sir Henry is a local hero, being a predecessor of Donald Campbell having held both land and water speed records in the 1920's. Shame to say our interest was only in the beer and food.

Wetherspoon pubs are pretty predictable and the Sir Henry proved no different. The usual range was on plus George Wright Midday Sun, Osset Gold, Ringwood 49 and Clarks No Angel. I plumped for the Osset Gold which was in good condition and most enjoyable. However we were really only there for refuelling purposes before making our way back to Liverpool.

And so we arrived back... just in time for a quick one in the Ship and Mitre. Since our last visit the previous day Phoenix Black Bee Honey Porter, Titanic Triple Screw and Lees Best Bitter were additions to the range. I tried Lees Bitter which was pretty ordinary, leaving the Phoenix, one of my favourite breweries, till last. I was not disappointed. A cracking beer, one to send me off to bed and so it did with thoughts of our visit to Cains Brewery tomorrow.

Steve Dyson

J.D. Wetherspoon

Now two Wetherspoon's pubs in Solihull Town Centre offer you a choice of casual drinking or dining and dining.

Over the last 10 years, JD Wetherspoon has won over 50 national and regional awards, acknowledging excellence in all aspects of the business; and they are consistently in the top 100 employers. Cask Marque has awarded 650 of their pubs with their accreditation so you can be sure of the perfect pint. They offer carefully chosen menus, with leaflets available to explain where all their produce comes from; and have an award winning children's menu which combines quality, healthy goodness and value with organic options.

The White Swan, opened on March 2004, and now The Assembly Rooms, opened in February 2008, are proud to serve Solihull town centre in their separate establishments. As you can see from the above, quality produce and excellent service is a watchword, and we do hope that you will take the time to visit us at any time during the day or night during our extensive opening hours. You will be sure of a warm welcome.

The Assembly Rooms, 21 Poplar Road, Solihull, B91 3AD

Phone: 0121 711 6990

Opening times: Sun—Wed: 9.00am—1.00am; Thurs—Sat: 9.00am—2.00am

Next to an exit from Mell Square shopping centre and car park, The Assembly Rooms is ideally situated for a shopping trip break, and our opening hours should suit everyone.

Lloyds No.1 bars have pleasant background music; at the weekends, in busy towns, the party continues into the evenings – many with live DJs getting you in the mood for a great night out! We restrict music to the upper floor, leaving downstairs visitors to enjoy a more peaceful visit. With 15 hand-pumps, we are proud that we can offer discerning drinkers a wide range of real ales plus other drinks to enhance their visit.

For any queries: contact James, the manager, or one of his staff on 0121 711 6990.

The White Swan, 32–34 Station Road, Solihull, B91 3SB

Phone: 0121 711 5180

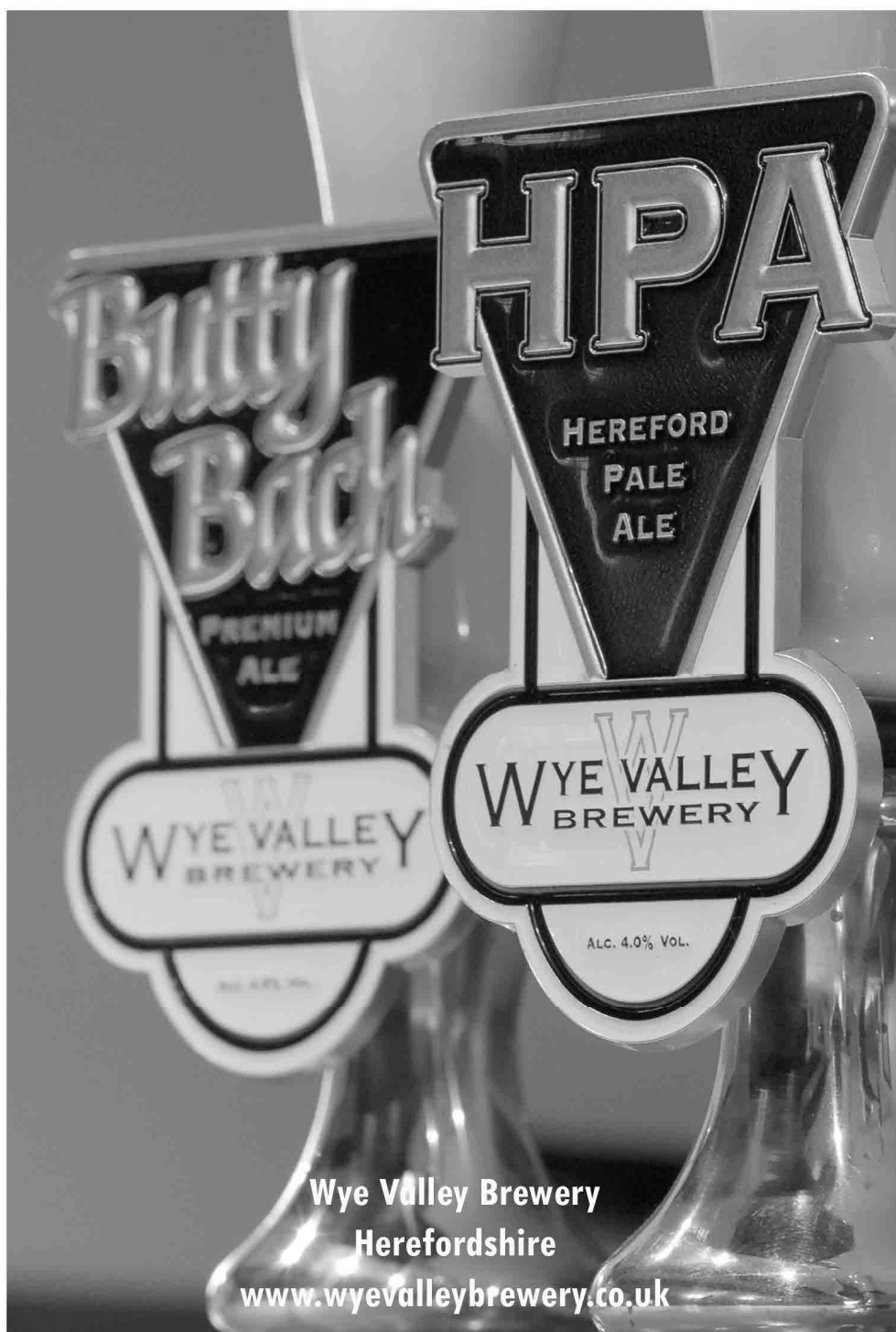
Opening times: Sun—Thurs: 9am—midnight; Fri/Sat: 9am—1am

The White Swan was an old coaching inn at the corner of Station Road, which became a private residence known as Silhill House in the 1820s. 'Silhill' was once a popular variation of 'Solihull'. Demolished around 1926, it was replaced by the present Tudor-style shops. Solihull's transformation from a sleepy market town to a Metropolitan Borough dates from the opening of the railway in 1852. The White Swan is enjoying its popularity within the town and is hoping to run a mini-beer festival in the near future.

Wetherspoons is holding a beer festival from 15th April to 4th May, with over 100 beers on during this period. Tasting notes will be available for visitors. Participating pubs in the Solihull area are The Assembly Rooms and The White Swan in the town centre, and the Spread Eagle in Acocks Green. For more details of forthcoming events at the above

pubs, including seasonal specials' drinks and offers, visit [http://](http://www.jdwetherspoon.co.uk)

www.jdwetherspoon.co.uk.



Wye Valley Brewery
Herefordshire
www.wyevalleybrewery.co.uk